

# Packaging instructions

for deliveries to

**TKD** *KABEL GmbH*

**TKD KABEL GmbH**  
**Nettetal Head Office**  
An der Kleinbahn 16

41334 Nettetal, Germany

**TKD KABEL GmbH**  
**Iserlohn Facility**  
Zollhausstr. 6

58640 Iserlohn, Germany

## Table of Contents

1.Delivery on euro pallets .....	3
2.Delivery of drums .....	5
3.Maximum loading height.....	6
4.Labelling .....	6
5.Documentation .....	6
6.Test samples .....	6
7.Securing cargo .....	6
8.Notification of deliveries .....	7
9.Unloading .....	7

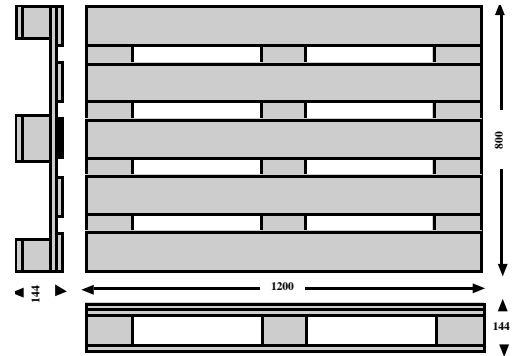
## 1. Delivery on euro pallets

The goods must be delivered exclusively on euro pallets which are suitable for high-bay warehouses and automatic material handling equipment.

Drums in sizes from 400 to 800 mm must be delivered exclusively on euro pallets with the dimensions 1200 x 800 x 144 mm.

Technical data:

Length:	1200 mm
Width:	800 mm
Total height:	144 mm
Clearance:	100 mm
Tare weight:	28-32 kg
Permissible total weight:	1,000 kg
Footprint:	0.96 m <sup>2</sup>



### **Euro pallet**

(pool pallet DIN 15 146, page 2, dimensional standard and DIN 15 147, UIC 435-2 – NEW **or class A**)

The flat pool pallet with a load area of 800 x 1200 mm must be a four-way pallet, i.e. it can be lifted from all four sides without any problems. It must comply with the DIN standards and regulations of the European pallet pool in every detail.

### **Condition of the euro pallets suitable for high-bay warehouse storage**

Euro pallets are not fit for use when:

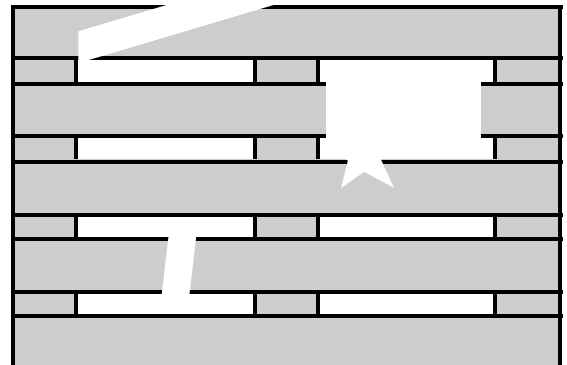
- a board is missing or broken diagonally or crosswise, or any lower or upper edge boards are splintered to the extent that...
  - ...two or more nail or screw shanks are visible on any one board, or
  - ...on more than two boards one or several nail or screw shanks are visible.
- a block is missing, broken or splintered to the extent that more than one nail or screw shank is visible.
- it is obvious that inadmissible components have been used for repairs, (e.g. boards or blocks which are too thin, too narrow or too short).
- the general condition is so poor that sufficient load capacity can no longer be guaranteed (brittle, rotten, or with several boards or blocks splintered off)
- the moisture level is so high that weathering can be perceived or labels do not stick.



Keine fehlenden Klötze !



Kein unzulässiges Bauteil verwenden !



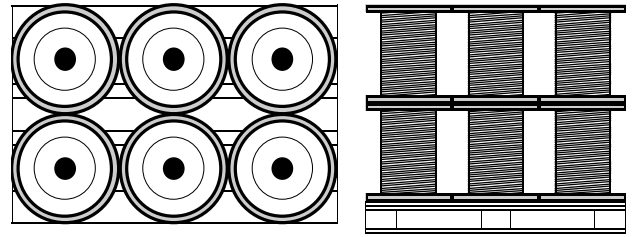
Keine Bruchstellen !

## Loading of the euro pallets

For easier handling, each pallet should only be loaded with drums of one size.

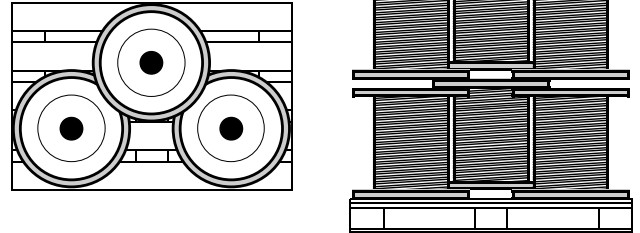
**400 mm drums**

- Maximum one layer
  - drums with plastic flange
- Maximum two layers
  - drums with wood or plywood flange, height 450 mm
- Maximum three layers
  - drums with wood or plywood flange, height 300 mm



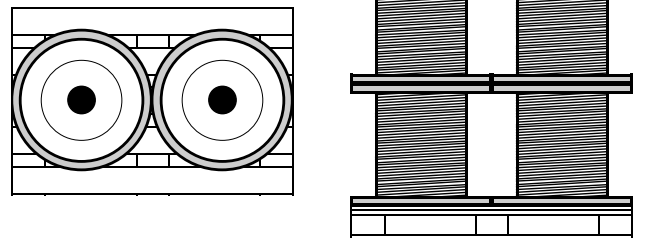
**500 mm drums**

- Maximum one layer
  - drums with plastic flange
- Maximum two layers
  - drums with wood or plywood flange, height 470 mm



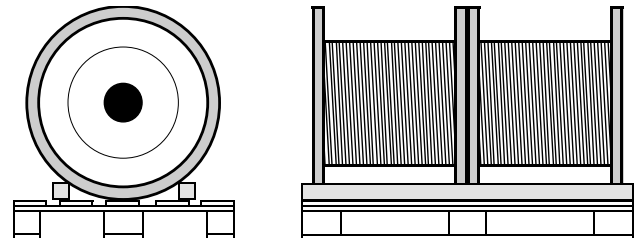
**600 mm drums**

- Maximum one layer
  - drums with plastic flange
- Maximum two layers
  - drums with wood or plywood flange, height 520 mm



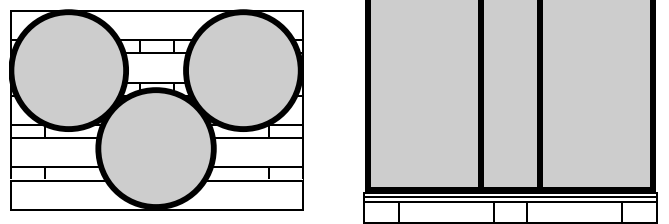
**700/800 mm drums**

Attention: only drums of equal size should be placed on one pallet.



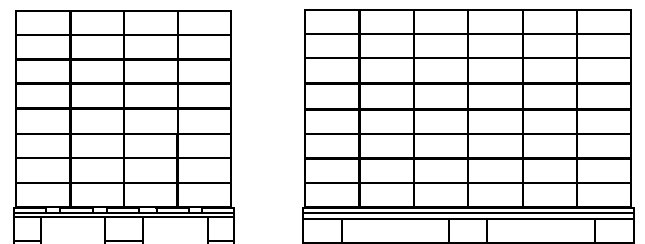
**Barrels**

Standing side-by-side



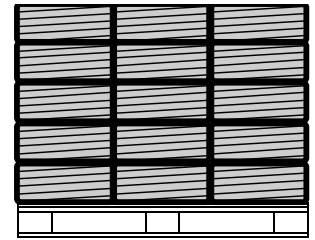
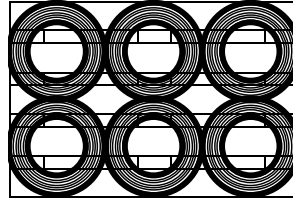
**Single-core cable cartons**

- maximum height 900 mm
- avoid mixed pallets, or mark them clearly,
- pallets loaded with single-core cable cartons must not be stacked on top of each other,
- if necessary, stabilise the single-core cable cartons with layers of cardboard/plywood,
- use edge-protection materials.



## Rings

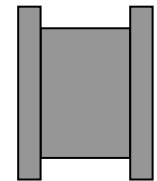
- maximum height 900 mm,
- between the pallet and the first layer of rings, a layer of cardboard or packing paper must be placed to protect the rings.
- Avoid mixed pallets, or mark them clearly.



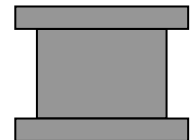
## 2. Delivery of drums

Since drums in sizes from 900 mm upwards exceed the dimensions of pallets, these drums must be delivered as follows:

- **flat cables** → standing upright, without pallets
  - **round cables** → lying horizontally, can be stacked
- > For 1800 mm drums, the maximum weight of 2,500 kg must not be exceeded.
- > All deliveries of drums in sizes above 1800 mm and/or drums with a weight of more than 2,500 kg, up to a maximum weight of 5,000 kg, require individual notification.



Flat cables from 900 mm



Round cables from 900 mm

### ***Condition of the drums in sizes from 900 mm upwards***

#### **Drums**

- Weatherproof, forklift-compatible drum quality with sufficient load capacity, no pressed materials.
  - Generally, wooden drums must be delivered exclusively treated according to ISPM 15, exceptions are only possible by explicit special agreement with the buyer responsible.
  - The load capacity of the drum flanges must be at least equal to the total weight of the full drum. The drum flanges must be suitable for forklift handling.
  - The minimum drum core diameter depends on the specific requirements in each case, fitting the bending radii of the cables and conduits to be delivered.
  - The dimension of the axial receiving bore must lie between 40 and 90 mm.
- No screws or connection elements may protrude from the outer surface of the drum.

## Winding

- With an intermediate layer of neutral, environmentally friendly sheet or similar suitable materials between the drum core and the wound goods. Advertising media are not permissible!
- For drum winding, the following reference values for distances to the edge of the flange apply, depending on the drum size:

<u>Drum size</u>	<u>Distance from flange edge</u>
600 mm	approx. 6 cm
700/800 mm	approx. 7 cm
from 900-2200 mm	min. 8 cm

- Drums must always be kept able to roll smoothly.
- Sufficient ground clearance must be ensured.
- For external sheet wrapping, exclusively our TKD packaging sheet according to current specifications may be used.

## Cable ends

- Both cable ends must be freely accessible for quality inspection. Length approx. 150 mm.
- Fasten the cable ends on the drum flange with staples, string or TKD packaging sheet.
- The cable ends must be closed in a moisture-proof manner with end caps. Flat cables are an exception, here wrapping with waterproof tape is also permissible. Do not use any sealing made of resins, pastes or wax.

## 3. Maximum loading height

For goods delivered on euro pallets, care must be taken that the maximum loading height of 1200 mm incl. the pallet is not exceeded.

## 4. Labelling

Labels on each individual package must be affixed in such a way that they are easy to read on the euro pallet from the outside.

All cables with UL and/or CSA approval must come with sufficient UL and/or CSL labels to cover the length involved. These must be attached to the drum flange or carton in a clearly visible position. The UL product information must also be present, preferably fastened to the drum flange.

## 5. Documentation

Contractually agreed documentation (e. g. test documentation) must be affixed to the drum or packaging unit in a clearly visible paper form.

## 6. Test samples

Contractually agreed test samples shall be clearly visible on the drum or packaging unit.

## 7. Securing cargo

- The goods must be secured against slipping on the euro pallet with stretch film.
- Do not cover the openings of the euro pallet for forklift handling with stretch film.
- Individual drums can be secured with tension straps (possibly with edge protection) as an alternative.

- For barrels, single-core cable cartons and rings wrapped in sheet, a layer of corrugated cardboard must be placed between the euro pallet and the packages. Mixed pallets must be marked clearly, edge protection materials must be used on goods packed in cartons.
- When stacking euro pallets, appropriate safety devices must be used, such as wooden frames or interim layers of cardboard to prevent damage to the goods on the bottom euro pallet through pressure or abrasion.
- The goods must be loaded so that they arrive at their destination undamaged, in good condition.

## **8. Notification of deliveries**

The supplier must notify TKD prior to loading the goods on a forwarder's vehicle.

Notification will only be sent by e-mail using the attached interactive PDF form. ([avisierung@tkd-kabel.de](mailto:avisierung@tkd-kabel.de)). Notification of shipments by telephone is only possible for shipments of less than 5 Colli.

The articles must be listed on attached packing lists or delivery notes.

**The delivery date for any shipments of more than 5 Colli must be set by TKD.**

The goods must not be dispatched from your warehouse until we have confirmed the delivery date. Our confirmation will also include the delivery date we assign you, which specifies not only the day of delivery, but also a time frame on that day. Under normal circumstances, this time frame should be observed by the forwarder.

The goods must be delivered packed on euro pallets according to our packaging instructions.

## **9. Unloading**

Basically, it is only possible to unload vehicles on our premises from the rear, via a ramp with forklifts or lifting trucks. We have no facilities for unloading vehicles from the side generally. With the following exception: deliveries of drums with a weight from 2,500 kg are exceptional cases; they require notification separately and must be prepared for unloading from the side.

Please also note our general business hours for accepting deliveries: Mon to Fri from 07:00 to 12:00, and for unloading by special agreement 12:30 to 14:00.

**We herewith declare explicitly that in case of non-compliance with these instructions we will refuse to accept and unload the delivery! We also declare that any additional costs incurred as a result will be charged!**

Notification of deliveries

**Supplier**

**Date:**

**Forwarder**

**Name:**

**Contact person:**

**Telephone number:**

**Fax number:**

**Email:**

**Possible date of dispatch:**

**Date of arrival:**

<b>Order number</b>	<b>Number of euro pallets</b>	<b>Number of loose drums</b>

**Attachments:**